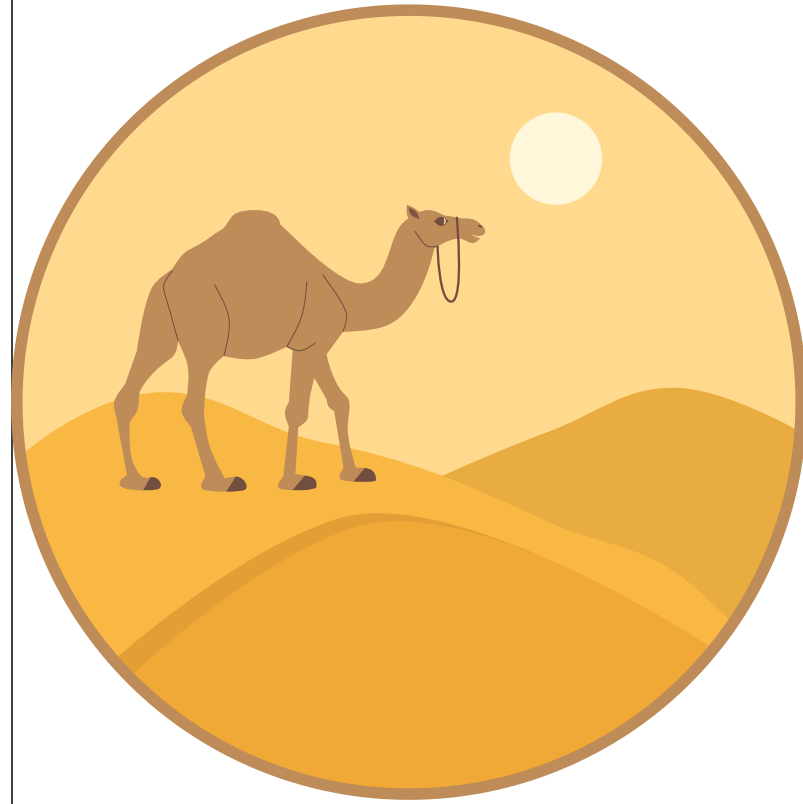


Perspective plan

2025-30



State leadership academy
Rajasthan

LONG-TERM GOALS 2025-2030

CAPACITY BUILDING OF ALL MIDDLE MANAGERS ON 21ST CENTURY COMPETENCIES ACQUIRED WITH CPD

TRANSFORMATION OF MIDDLE MANAGERS AS CHANGE MAKER TO CREATE SAFE LEARNING ENVIRONMENT

CONTINUOUS PROFESSIONAL SUPPORT

REDEFINE ROLE N RESPONSIBILITIES IN TERMS OF NEP20

ESTABLISH GLOBAL N NATIONAL NETWORKING N PARTNERSHIP TO ACHIEVE GOALS

DEVELOP DISTT RESOURCE GROUP

INNOVATIONS IN QUALITATIVE IMPROVEMENT OFCONTENT

MEDIUM-TERM GOALS 2025-2028

conceptualise NCSL curriculum for State specific initiative

Periodic capacity building of DRG to support school heads

Develop monitoring revaluation tool with help of drg

build knowledge partnership with universities n ngo

Develop E_content n online courses to develop digital literacy

Exposure visits to other siemat for peer learning

SHORT-TERM GOALS 2025-2026

Identify n develop DRG to enable school heads

Conduct research studies on behavioral transformation on middle managers

Theme based training program prosed for 25-26

Prepare impact study reports to assist in policy making

Preparation of integrated Trg calender as rscert,smsa ,diets to avoid duplication n effective execution

CPD program as regular activity

STRAND 1: CONTENT AND MATERIAL DEVELOPMENT

Analytical reports for every Capacity building activity

Awareness booklets for safe learning environment, cyber abuse, emotional management

Module development for all middle managers including Smta n directorate

Research reports Impact study reports

Reports of CPD programs n. Field visit reports

Suggest report to govt for policy consideration

Documentaries, E_books, motivational videos, magazine, annual report

STRAND 2: CAPACITY DEVELOPMENT

working as Distt OICs appoint by State govt

Collaboration with Rscert n smsa to develop various capacity building material

Faculty support from Unicef, Directorate n smsa to meet out challenges faced by middle managers

SLA team worked as in main stream of the deptt so better cordination n support to develop

MOU with competent NGOs n regular consultancy n technical support for data management n analysis

Strong monitoring by the apex bodies n opportunity to get exposure

Need based program developed for capacity building

STRAND 3: NETWORKING AND INSTITUTIONAL BUILDING

With all educational bodies. Niepa, Ncert, ngo's n their institutions, OTS, DOIT,

ongoing efforts to tie up with IIM, Universities n CSR companies

Physical literacy prog is being developed by experts of Piramal foundation

Azeem premji foundation is supporting for CPD of cbeos

Rscert may help to develop Attractive material

STRAND 4: RESEARCH AND DEVELOPMENT

Research on role translation of middle managers

Research on role translation of middle managers

**comparative study of pmshree school with normal school
in terms of resources n pedagogy**

**impact study of FLN n activity based training on teachers
in terms of understanding, execution n outcome**

**Adoption of a see learning school as role model n its
impact n comapative study with a general school**

Comparative study of integrated AWC n Separated AWC

In terms of enrollment, effectiveness n monitoring

**Gaps in school leadership academy's
visibility on the SLA portal**

Capacity building data

script of online courses

Motivational videos

Some modules

Specific details to be added in the SLA Decadal Report 2015-2025

Transformation journey of govt schools through leadership prog

Strategic development in class room teaching learning process ultimately leads to learners outcome

STATE SPECIFIC INITIATIVE REGARDING SLDP

TRANSLATION STORY OF NEP 20 ON FIELD

INITIATIVES LIKE CPD, ONLINE COURSES, DASH BOARD